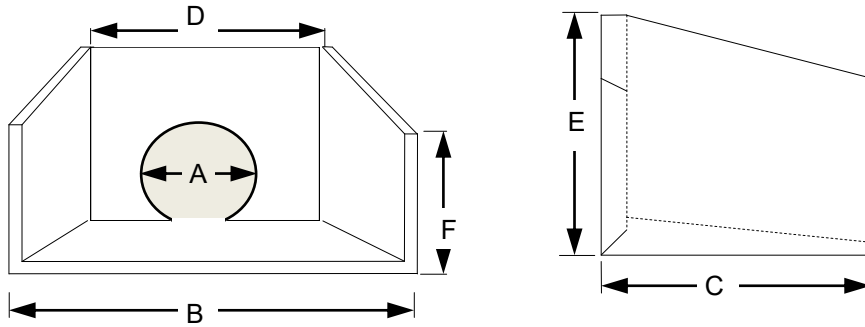


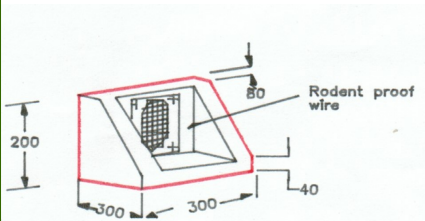
# HEADWALLS



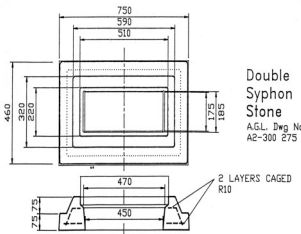
SIZE	MASS ( kgs)						
		A	B	C	D	E	F
100mm Mini* PVC	102	110	1280	380	460	430	305
150mm MINI* PVC	100	160	1280	380	460	430	305
225mm MINI* PVC	95	265	1280	380	460	430	305
225mm Concrete	95	295	1280	380	460	430	305
225mm	265	295	1100	530	630	730	560
300mm	265	378	1100	540	700	610	470
375mm	265	461	1100	530	635	730	570
450mm	248	543	1100	580	635	730	570
450mm LRGE	585	543	1700	780	795	1080	770
525mm	583	626	1700	780	795	1080	770
600mm	585	709	1700	780	795	1080	770

LARGER HEADWALL DIMENSIONS AVAILABLE ON REQUEST

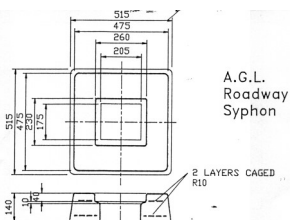
## Flat Batter Headwall & Syphon Stones



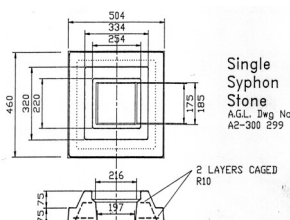
FLAT BATTER HEADWALL -20KGS



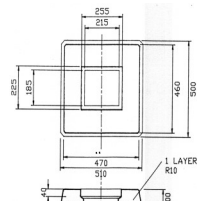
Double Syphon Stone  
A.G.L. Dwg No. A2-300 275



A.G.L. Roadway Syphon



Single Syphon Stone  
A.G.L. Dwg No. A2-300 259



Footpath Syphon Stone