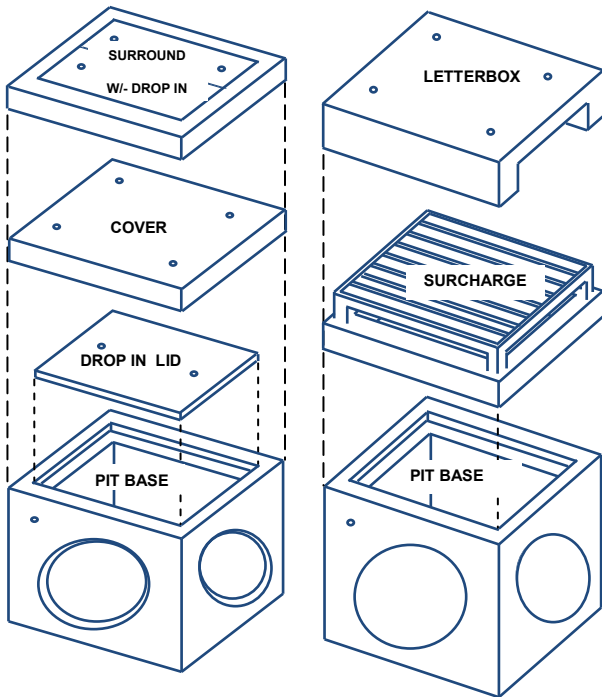
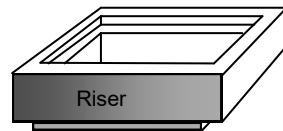
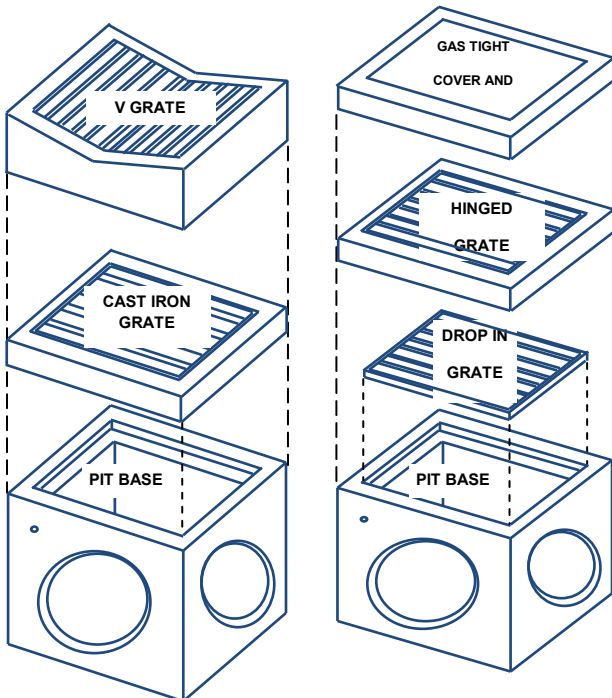


PITS, RISERS, SURROUNDS, COVERS & GRATES

AVAILABLE LIDS, COVERS GRATES

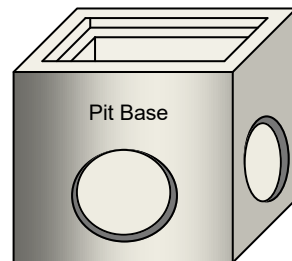


- Covers, Grates & Surrounds
- Drop in Concrete Lid
- Concrete Covers
- Surround with Drop in covers
- Concrete Letterbox Top
- Gastight Covers in Surrounds
(Class B, D & E)
- Cast Iron Grate & Frame in Surround
- GMS Grates in Surrounds
(Class B & D) Surcharge Grates
- Drop In Grates (Class B & C)
- Drop in Hinged Grate & Frame
(Class B C D E)
- GMS Vee Grate in Surround
- Rolled Form V Grate in Surround



Pit Risers to suit Pit Base

- 150mm
 - 300mm
 - 600mm
 - 900mm
 - 1200mm
- } For Larger pits only



Pit Base – Internal Measurement

- 450 x 450 x 450mm
- 450 x 450 x 600mm
- 600 x 600 x 600mm
- 600 x 900 x 900mm
- 600 x 900 x 600mm
- 900 x 900 x 900m
- 1200mm x 1200mm

Larger Sizes on application